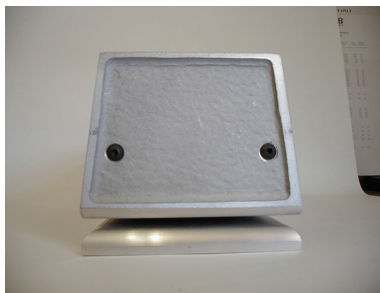
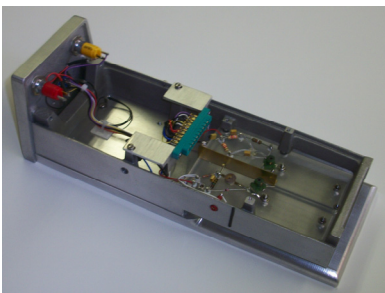
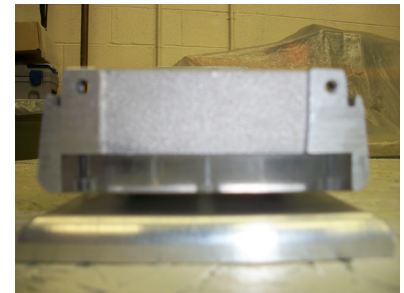
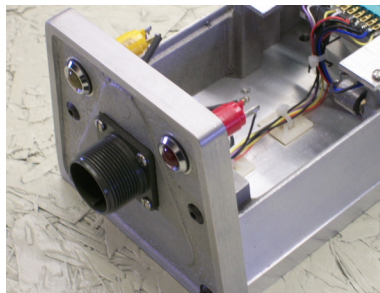
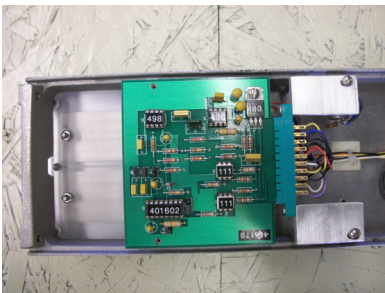
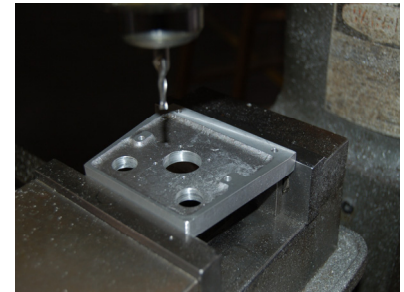
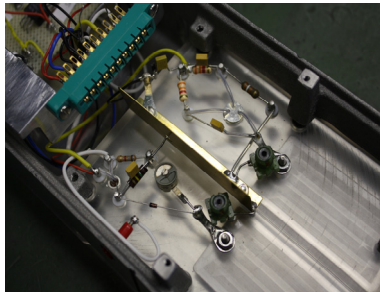
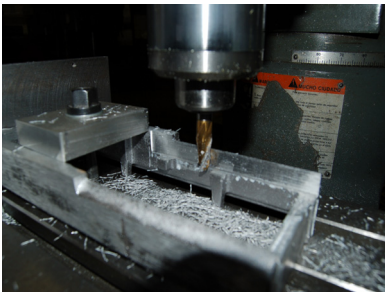
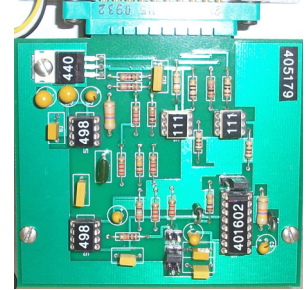
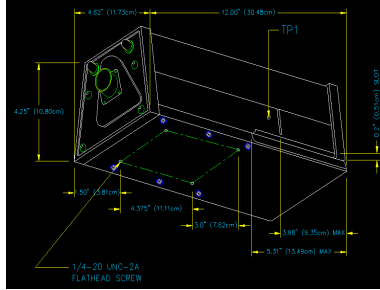


Equipment Pictorial Model 1088 Sentinel® Splice Detector™ Technology

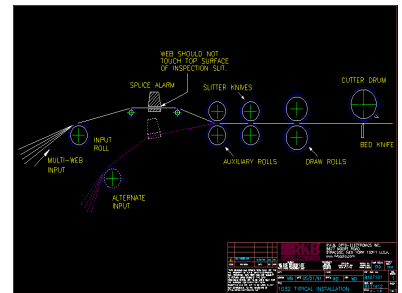
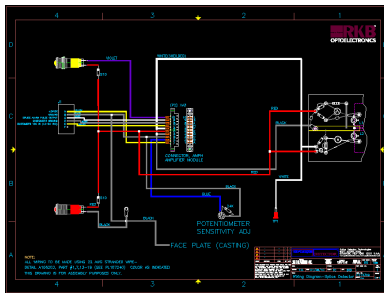
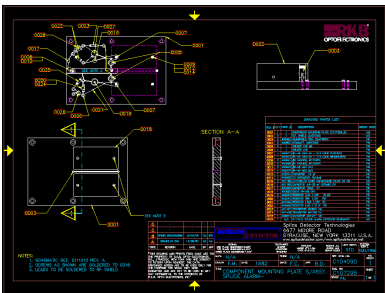
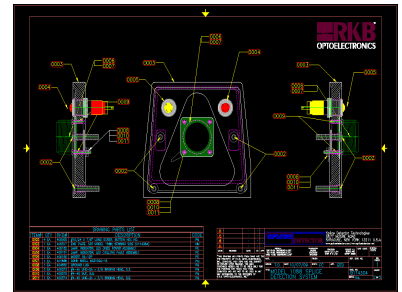
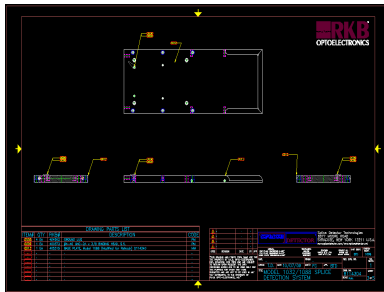
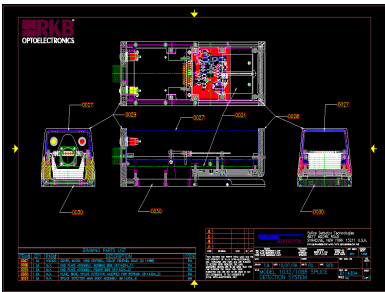
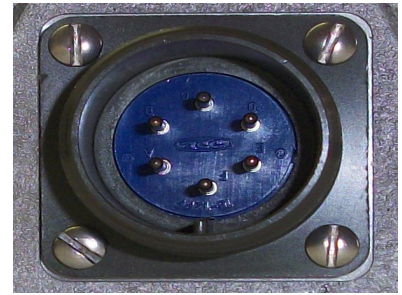
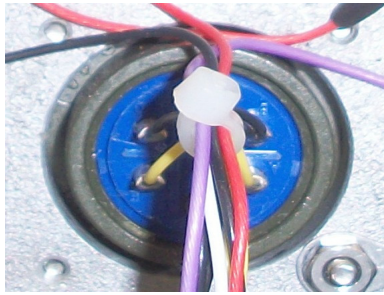


R.K.B. OPTO-ELECTRONICS, INC.

6677 Moore Road • Syracuse, New York • 13211 • United States of America

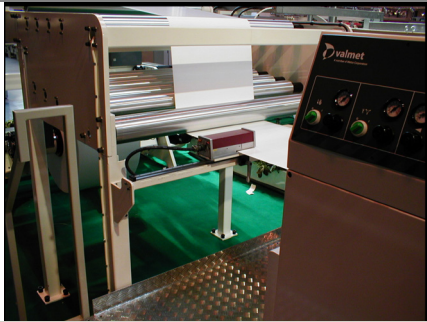
Tel: +001-315-455-6636 • Fax: +001-315-455-8216 • Email: sales@splicedetector.com

Internet: www.rkbopto.com / www.splicedetector.com / www.splicedetector.net



R.K.B. OPTO-ELECTRONICS, INC.

6677 Moore Road • Syracuse, New York • 13211 • United States of America
 Tel: +001-315-455-6636 • Fax: +001-315-455-8216 • Email: sales@splicedetector.com
 Internet: www.rkbopto.com / www.splicedetector.com / www.splicedetector.net



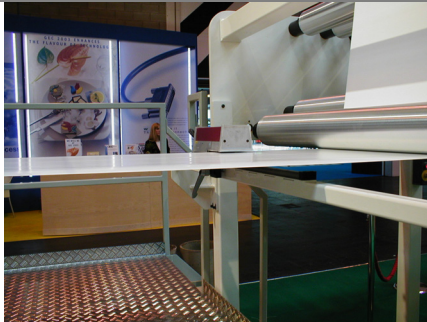
**Model 1088 Sentinel®
Splice Detector™ Valmet
Atlas Sheeter Install**



**Model 1088 Sentinel®
Splice Detector™ Strachen
Henshaw Sheeter**



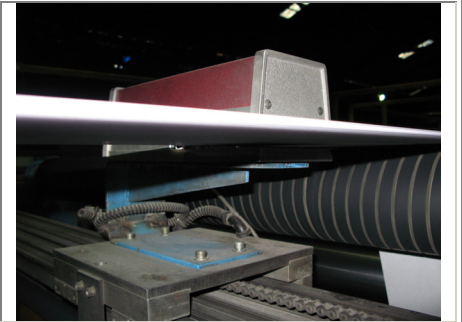
**Model 1088 Sentinel®
Splice Detector™ Strachen
Henshaw Sheeter**



**Model 1088 Sentinel®
Splice Detector™ Bobst
Atlas Sheeter**



**Model 1088 Sentinel®
Splice Detector™ Coating
Machinery**



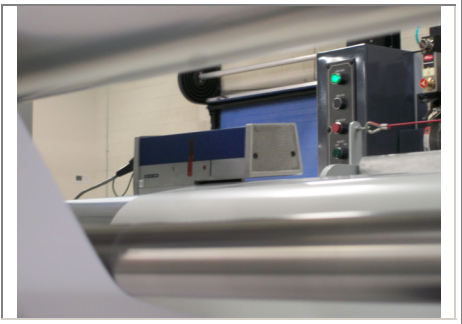
**Model 1088 Sentinel®
Splice Detector™ Jagenberg
Sheeter**



**Model 1088 Sentinel®
Splice Detector™ ECH Will
Sheeter**



**Model 1088 Sentinel®
Splice Detector™ Pizzolato
Sheeter**



**Model 1088 Sentinel®
Splice Detector™ Maxson
Sheeter**

R.K.B. OPTO-ELECTRONICS, INC.

6677 Moore Road • Syracuse, New York • 13211 • United States of America
Tel: +001-315-455-6636 • Fax: +001-315-455-8216 • Email: sales@splicedetector.com
Internet: www.rkbopto.com / www.splicedetector.com / www.splicedetector.net



**Model 1088 Sentinel®
Splice Detector™ Maxson
Sheeter**



**Model 1088 Sentinel®
Splice Detector™ Bag
Making Machine**



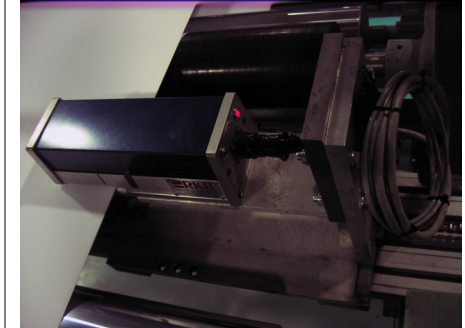
**Model 1088 Sentinel®
Splice Detector™ Jagenberg
Sheeter**



**Model 1088 Sentinel®
Splice Detector™ Jagenberg
Sheeter**



**Model 1088 Sentinel® Splice
Detector™ Accura
Sheeter**



**Model 1088 Sentinel® Splice
Detector™ ECH Will
Sheeter**

R.K.B. OPTO-ELECTRONICS, INC.

6677 Moore Road • Syracuse, New York • 13211 • United States of America
Tel: +001-315-455-6636 • Fax: +001-315-455-8216 • Email: sales@splicedetector.com
Internet: www.rkbopto.com / www.splicedetector.com / www.splicedetector.net