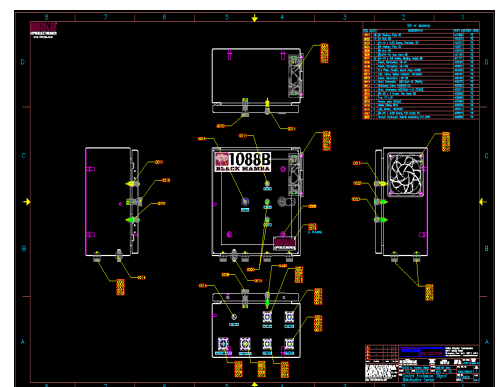
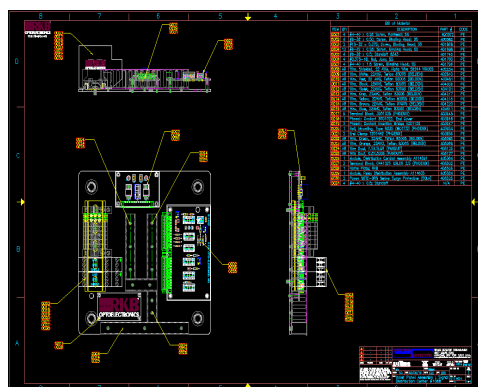
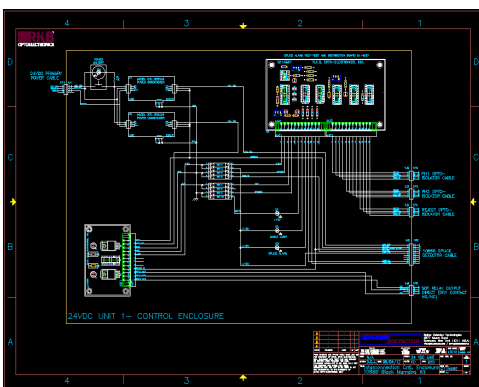
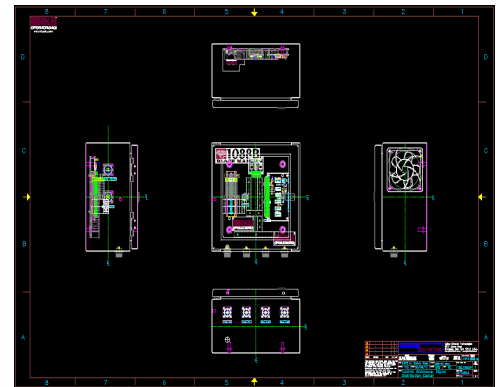
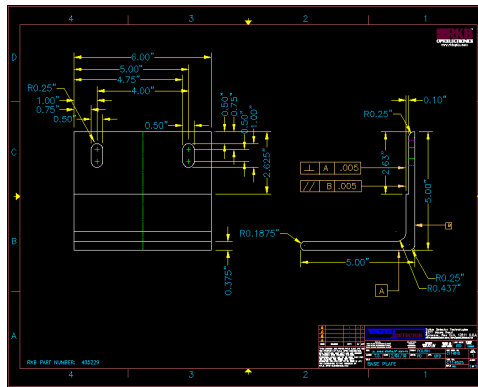
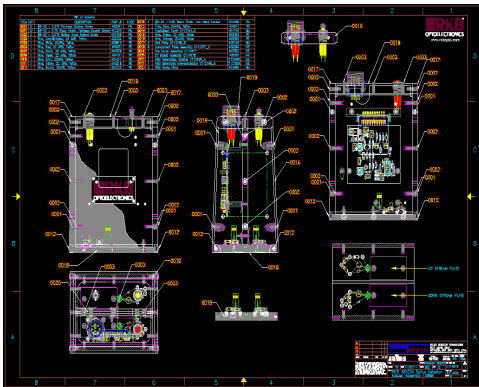
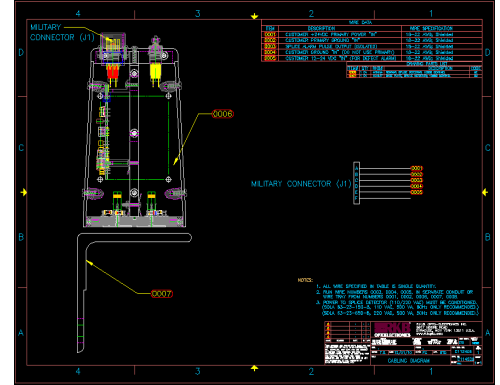
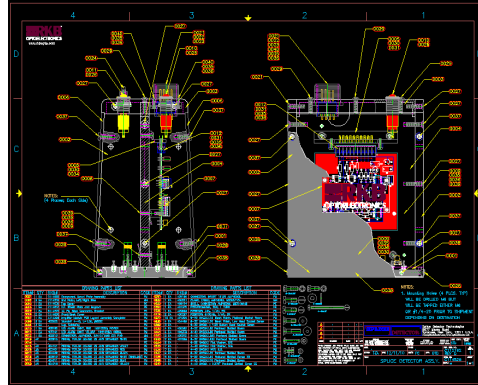
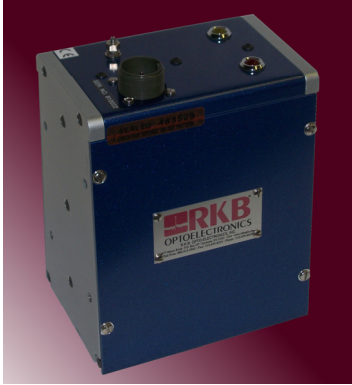


# Equipment Pictorial Model 1088BM Black Mamba® Web Press Splice Detector™ & Distribution Technology



**R.K.B. OPTO-ELECTRONICS, INC.**

6677 Moore Road • Syracuse, New York • 13211 • United States of America  
Tel: +001-315-455-6636 • Fax: +001-315-455-8216 • Email: sales@splicedetector.com  
Internet: www.rkbopto.com / www.splicedetector.com / www.splicedetector.net

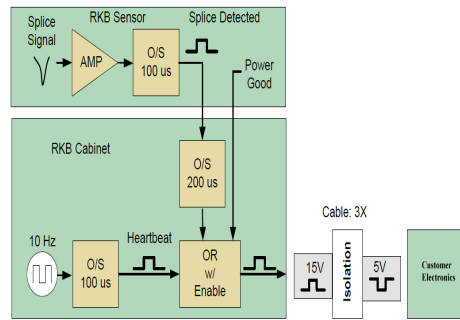
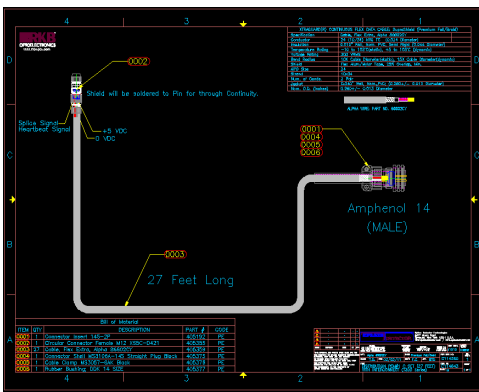
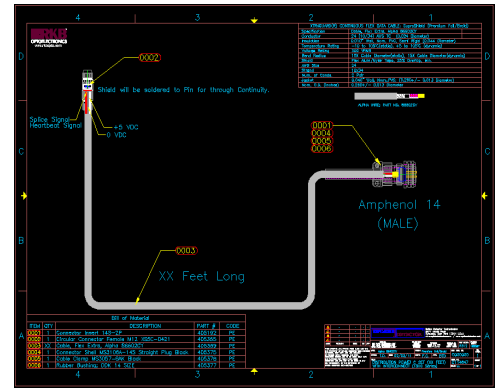
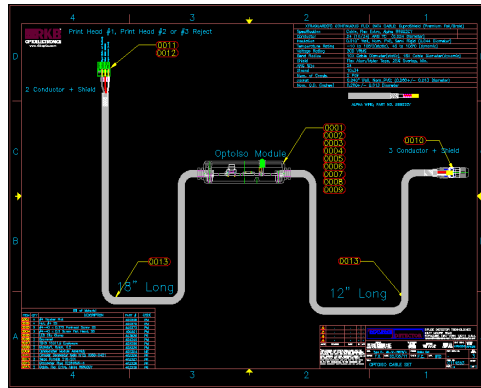
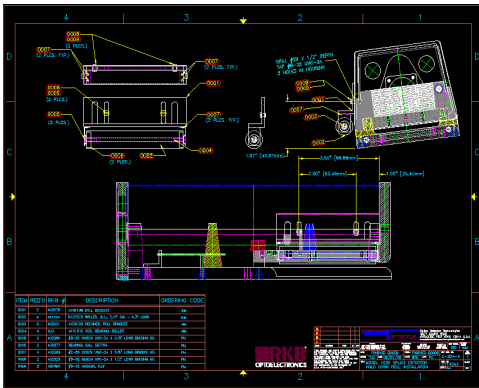
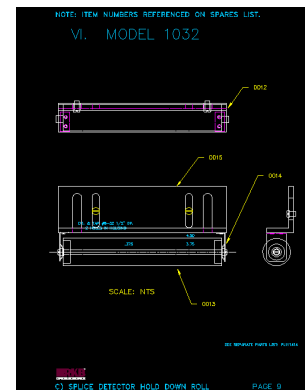
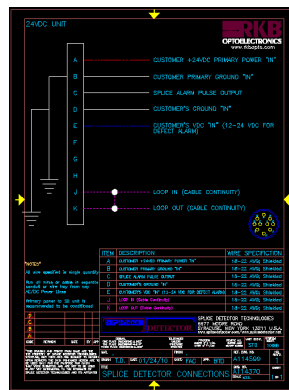
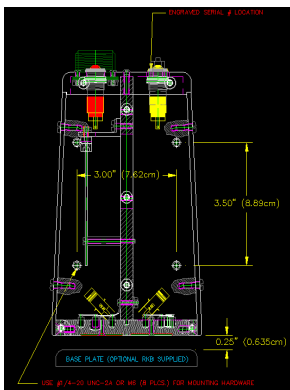
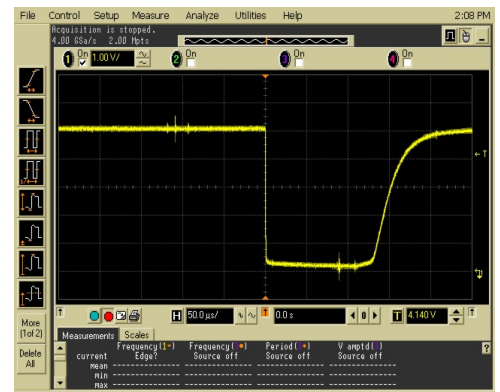


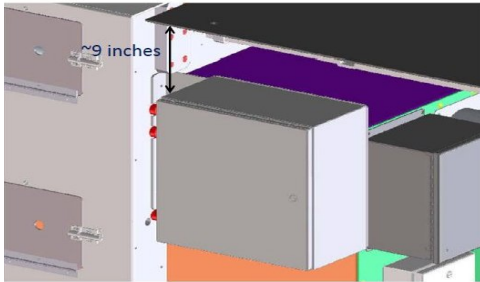
Figure 1: RKB System Block Diagram



## R.K.B. OPTO-ELECTRONICS, INC.

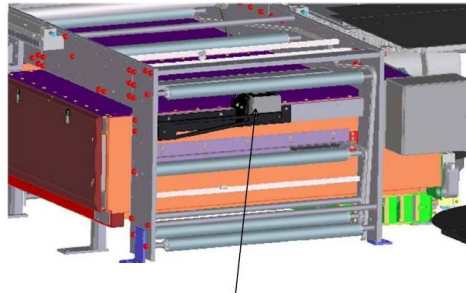
6677 Moore Road • Syracuse, New York • 13211 • United States of America  
 Tel: +001-315-455-6636 • Fax: +001-315-455-8216 • Email: sales@splicedetector.com  
 Internet: www.rkbopto.com / www.splicedetector.com / www.splicedetector.net

SPLICE DETECT ON T400



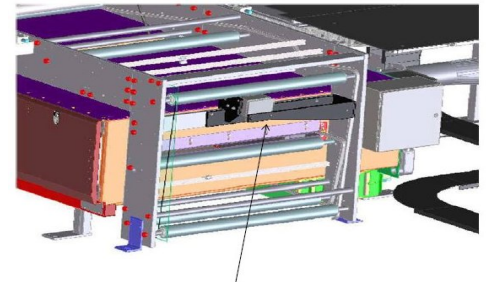
Control Box location

SPLICE DETECT ON T400



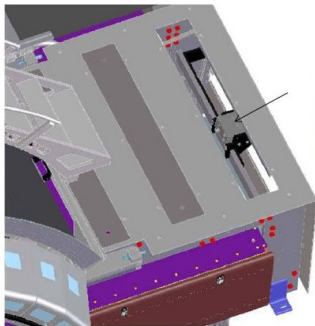
Located on the in-feed on PEM1

SPLICE DETECT ON T400



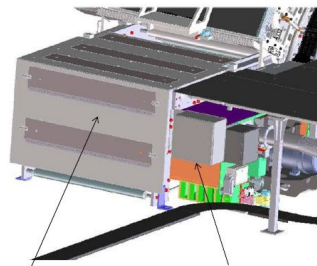
Located on the in-feed on PEM1

SPLICE DETECT ON T400



Access (if necessary, but no adjustment/maintenance is normally required).

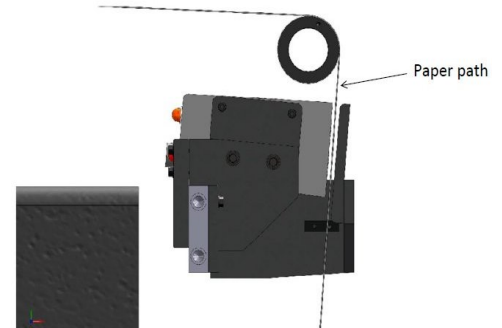
SPLICE DETECT ON T400



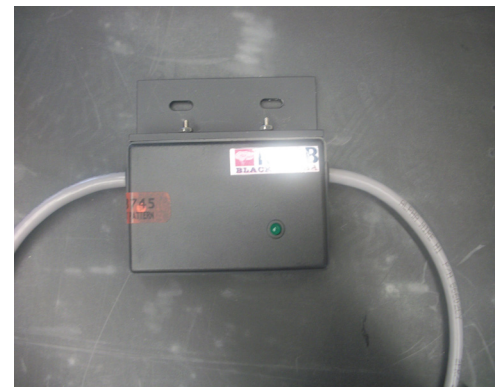
Detector located inside the cover on the in-feed on PEM1

Control Box location

SPLICE DETECT ON T400



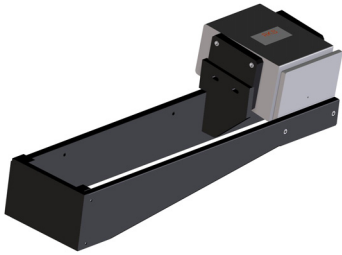
Paper path



**R.K.B. OPTO-ELECTRONICS, INC.**

6677 Moore Road • Syracuse, New York • 13211 • United States of America  
 Tel: +001-315-455-6636 • Fax: +001-315-455-8216 • Email: sales@splicedetector.com  
 Internet: www.rkbopto.com / www.splicedetector.com / www.splicedetector.net



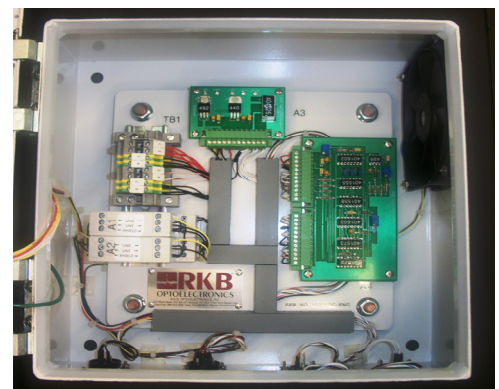


SPLICE DETECT ON T400



Detector located inside the cover on the in-feed on PEM1

Control Box location



**R.K.B. OPTO-ELECTRONICS, INC.**

6677 Moore Road • Syracuse, New York • 13211 • United States of America  
Tel: +001-315-455-6636 • Fax: +001-315-455-8216 • Email: sales@splicedetector.com  
Internet: www.rkbopto.com / www.splicedetector.com / www.splicedetector.net